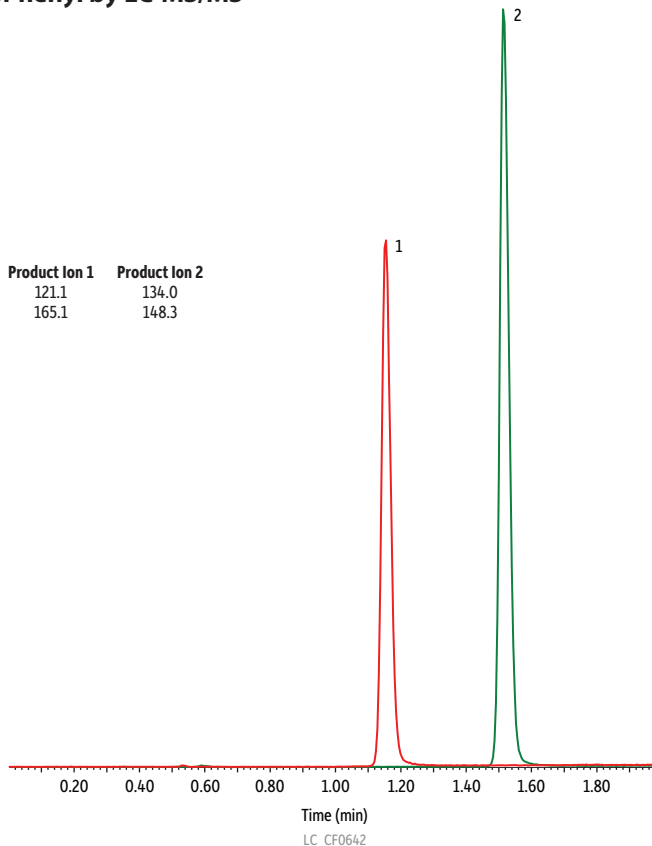


# Metanephtrines on Raptor™ FluoroPhenyl by LC-MS/MS

Peaks	tr (min)	Precursor Ion	Product Ion 1	Product Ion 2
1. Normetanephrine	1.15	166.1	121.1	134.0
2. Metanephrine	1.52	180.1	165.1	148.3



**Column** Raptor™ FluoroPhenyl (cat.# 9319A12)  
**Dimensions:** 100 mm x 2.1 mm ID  
**Particle Size:** 2.7 µm  
**Temp.:** 30 °C  
**Sample**  
**Conc.:** 20 ng/mL in water  
**Inj. Vol.:** 5 µL  
**Mobile Phase**  
**A:** Water + 0.2% formic acid  
**B:** Methanol

Time (min)	Flow (mL/min)	%A	%B
0.00	0.4	98	2
2.00	0.4	60	40
2.01	0.4	98	2
6.00	0.4	98	2

**Detector** MS/MS  
**Ion Mode:** ESI+  
**Mode:** MRM  
**Instrument** UHPLC