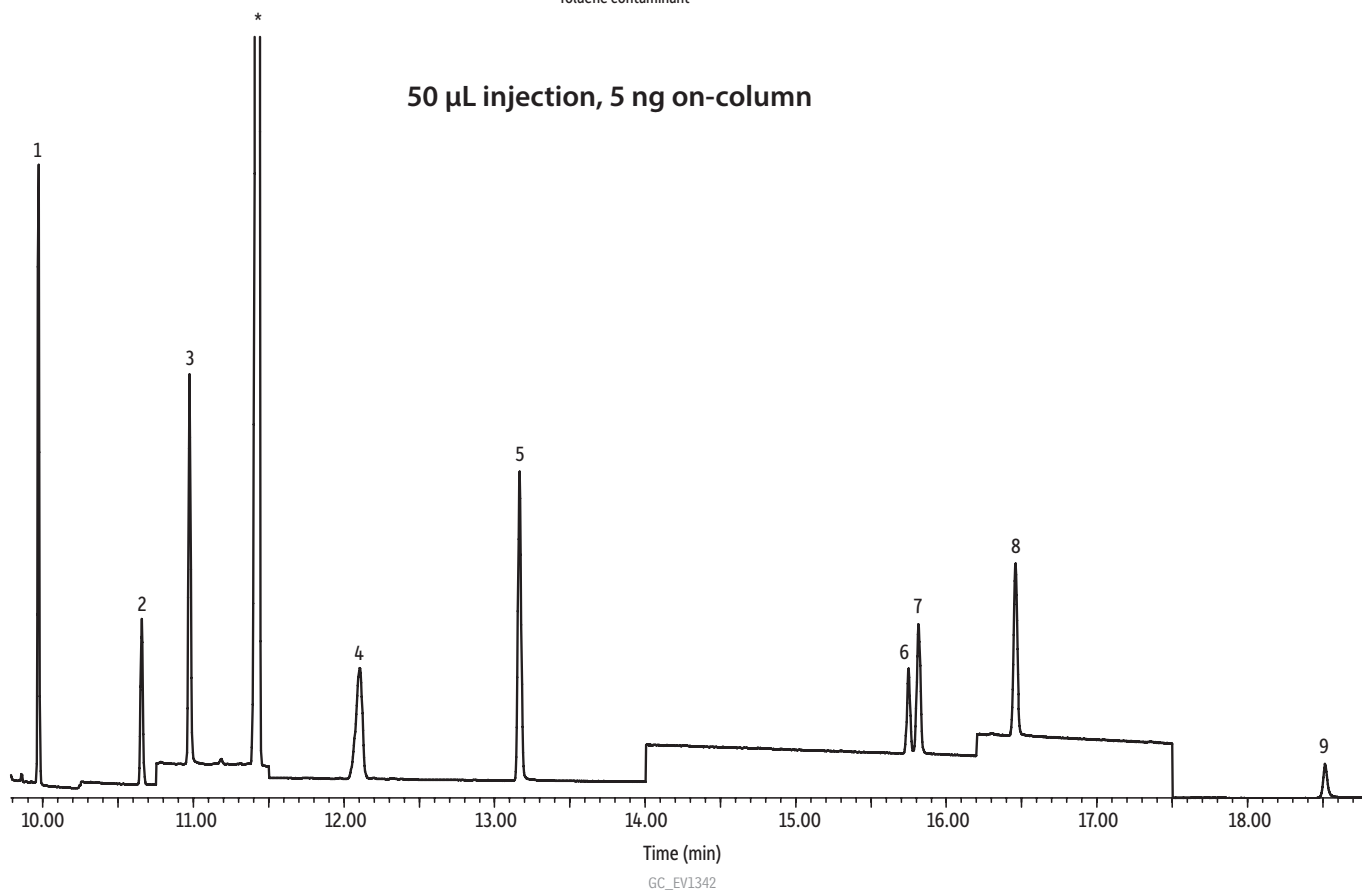


# 50 µL CSR-LVSI with 5 ng Nitrosamines, THF, and 1,4-Dioxane On-Column

- Peaks**
1. Tetrahydrofuran
  2. 1,4-Dioxane
  3. N-Nitrosodimethylamine
  4. N-Nitrosomethylethylamine
  5. N-Nitrosodiethylamine
  6. N-Nitrosopyrrolidine
  7. N-Nitrosodi-*n*-propylamine
  8. N-Nitrosopiperidine
  9. N-Nitrosodi-*n*-butylamine
  - \* Toluene contaminant



**Column** Rxi®-5Sil MS, 30 m, 0.25 mm ID, 1.00 µm (cat.# 13653)  
using Rxi® guard column 10 m, 0.53 mm ID (cat.# 10073)  
with BGB P/N: 2553LD

**Sample** 1,4-Dioxane (cat.# 30287)  
Nitrosamine calibration mix, Method 521 (cat.# 31898)  
Tetrahydrofuran (THF) (cat.# 30414)

**Diluent:** Dichloromethane  
**Conc.:** 0.1 µg/mL

**Injection**  
**Inj. Vol.:** 50 µL splitless (hold 1.5 min)  
**Liner:** Custom Premium single taper with 15 mg quartz wool  
**Inj. Temp.:** 275 °C  
**Purge Flow:** 100 mL/min

**Oven**  
**Oven Temp.:** 35 °C (hold 1.5 min) to 50 °C at 50 °C/min (hold 7.1 min) to 320 °C at 11.12 °C/min (hold 1.5 min)

**Carrier Gas**  
**Flow Rate:** He, constant flow  
5.08 mL/min

**Detector**  
**Mode:** MS  
SIM

SIM Program:

Group	Start Time (min)	Ion(s) (m/z)	Dwell (ms)
1	9.70	42, 46, 71, 72, 78, 80	40
2	10.25	58, 62, 64, 88, 96	40
3	10.75	42, 43, 46, 48, 74, 80	40
4	11.50	42, 44, 56, 88, 102	40
5	14.00	56, 68, 70, 78, 86, 100, 130, 144	25
6	16.20	55, 56, 84, 114	40
7	17.50	99, 116, 141, 158	40

Transfer Line  
**Temp.:** 320 °C  
**Analyzer Type:** Quadrupole  
**Source Temp.:** 230 °C  
**Quad Temp.:** 150 °C  
**Solvent Delay**  
**Time:** 9.7 min  
**Tune Type:** BFB  
**Ionization Mode:** EI  
**Instrument** Agilent 7890A GC & 5975C MSD